



# 16m Diesel Articulating Boom

## MACHINE SPECIFICATION SHEET

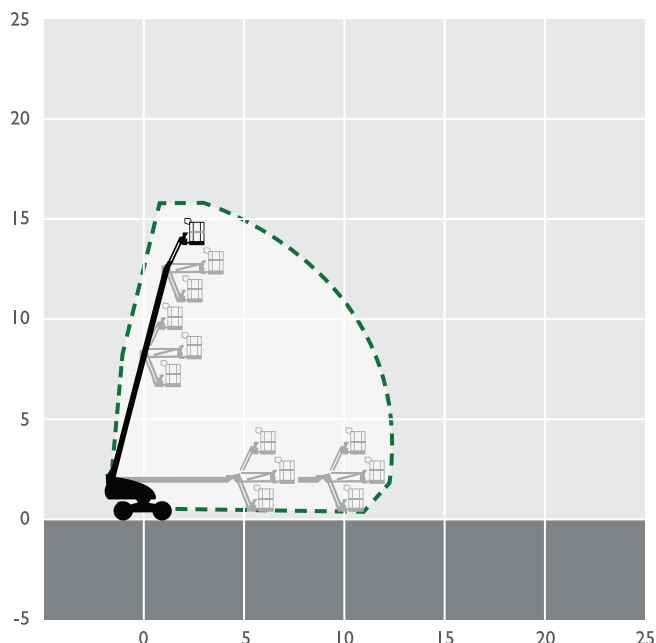
### BA16D

REACH HEIGHT	16.10m
PLATFORM HEIGHT	14.10m
CLOSED LENGTH	6.35m
CLOSED HEIGHT	2.06m
CLOSED WIDTH	2.29m
TURNING RADIUS	4.52m
LIFTING CAPACITY	227kg
WEIGHT	6,500kg
ROTATION	355°
HORIZONTAL REACH	7.54m
CAGE DIMENSIONS	0.76x1.83m
IPAF CATEGORY	3b
POWER	DIESEL
FEATURED MODEL	SKYJACK SJ46AJ
ALTERNATIVE MODELS	GENIE G4525DJ

These machines offer the following range of benefits:

- The articulating jib booms offer precise platform positioning, ideal for work areas that may be confined or difficult to access
- Offering outreach and up-and-over clearance they offer a flexible solution for many applications
- 4x4 offers strong traction where ground conditions are challenging
- Suitable for a variety of applications - construction, maintenance, or industrial

The information provided is for guidance only. It may change at any time in accordance with manufacturer's specification.



**For further information  
visit [accessrental-gulf.com](https://accessrental-gulf.com)**