



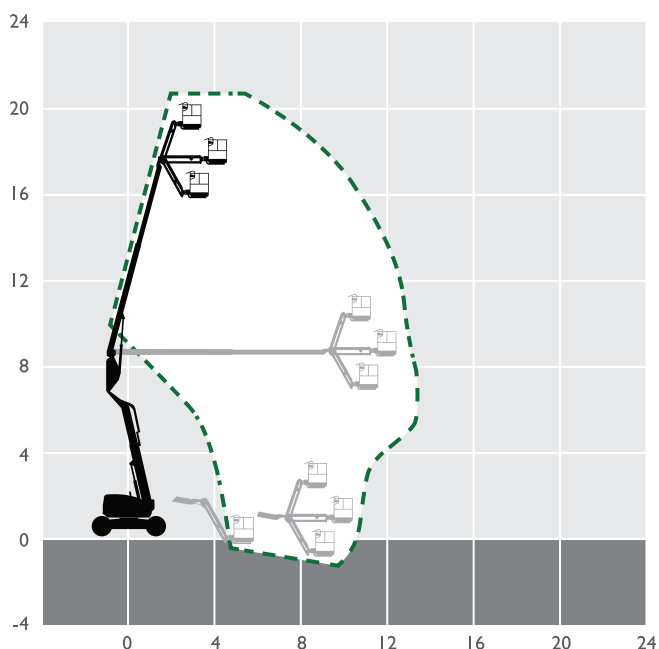
21m Diesel Articulating Boom

MACHINE SPECIFICATION SHEET

BA20D

REACH HEIGHT	21.38m
PLATFORM HEIGHT	19.38m
CLOSED LENGTH	9.14m
CLOSED HEIGHT	2.54m
CLOSED WIDTH	2.44m
TURNING RADIUS	5.31m
LIFTING CAPACITY	227kg
WEIGHT	9,616kg
ROTATION	360°
HORIZONTAL REACH	12.19m
CAGE DIMENSIONS	0.91x2.4m
IPAF CATEGORY	3b
POWER	DIESEL

FEATURED MODEL	SKYJACK SJ63AJ
ALTERNATIVE MODEL	GENIE GZ6034



These machines offer the following range of benefits:

- Axle based 4WD system
- Operator controlled locking rear differential and limited slip front differential
- Oscillating axle
- 360° Continuous turret rotation
- Modular platform railing system

The information provided is for guidance only. It may change at any time in accordance with manufacturer's specification.

**For further information
visit accessrental-gulf.com**