



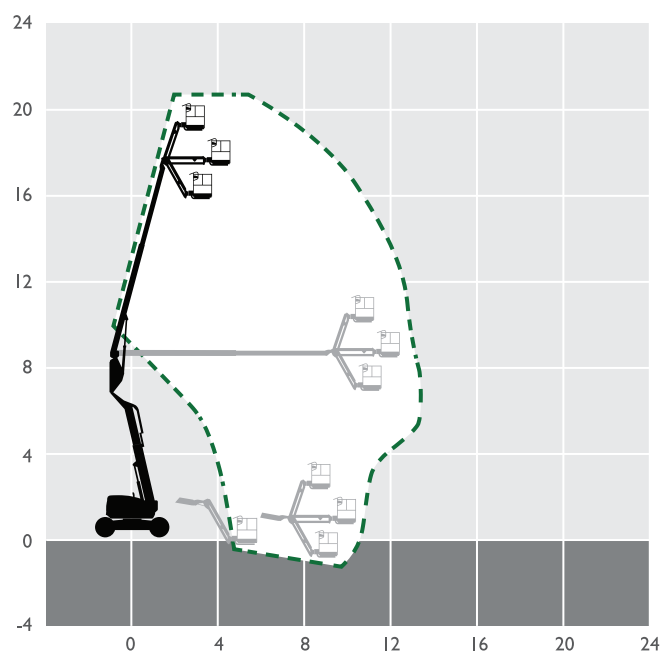
28m Diesel Articulating Boom

MACHINE SPECIFICATION SHEET

BA28D

REACH HEIGHT	27.91m
PLATFORM HEIGHT	25.91m
CLOSED LENGTH	11.63m
CLOSED HEIGHT	2.67m
CLOSED WIDTH	2.49m
TURNING RADIUS	6.22m
LIFTING CAPACITY	227kg
WEIGHT	16,465kg
ROTATION	360°
HORIZONTAL REACH	17.07m
CAGE DIMENSIONS	0.91x2.40m
IPAF CATEGORY	3b
POWER	DIESEL

FEATURED MODEL	SKYJACK SJ85AJ
----------------	----------------



These machines offer the following range of benefits:

- EASYDRIVE™ Direction sensing drive and steer controls
- SPEEDYREACH™ Negative boom angle capability
- SKYRISER™ True vertical rise
- AXLDRIVE™ Axle-based 4WD system
- Operator controlled locking rear differential and limited slip front differential
- Oscillating steer axle

The information provided is for guidance only. It may change at any time in accordance with manufacturer's specification.

**For further information
visit accessrental-gulf.com**