



22m Diesel Telescopic Boom

MACHINE SPECIFICATION SHEET

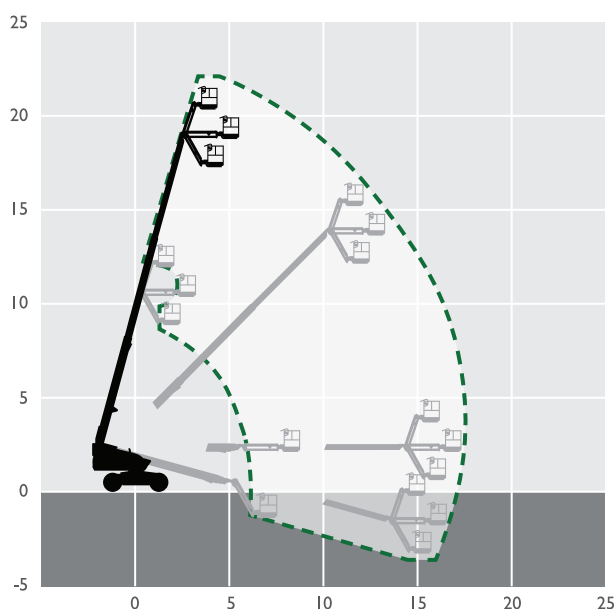
BS22D

REACH HEIGHT	22.12m
PLATFORM HEIGHT	20.12m
CLOSED LENGTH	10.34m
CLOSED HEIGHT	2.57m
CLOSED WIDTH	2.44m
TURNING RADIUS	5.05m
LIFTING CAPACITY	227kg
WEIGHT	12,800kg
ROTATION	360°
HORIZONTAL REACH	17.37m
CAGE DIMENSIONS	0.91x1.83m
IPAF CATEGORY	3b
POWER	DIESEL
FEATURED MODEL	SKYJACK SJ66T
ALTERNATIVE MODEL	GENIE S65

These machines offer the following range of features:

- Axle based 4WD
- Oscillating axle
- 360° continuous turret rotation
- 50% gradeability
- Grip lug foam-filled tyres
- Tilt alarm with drive cut-out
- Modular platform railing system

The information provided is for guidance only. It may change at any time in accordance with manufacturer's specification.



**For further information
visit accessrental-gulf.com**