



28m Diesel Telescopic Boom

MACHINE SPECIFICATION SHEET

BS28D

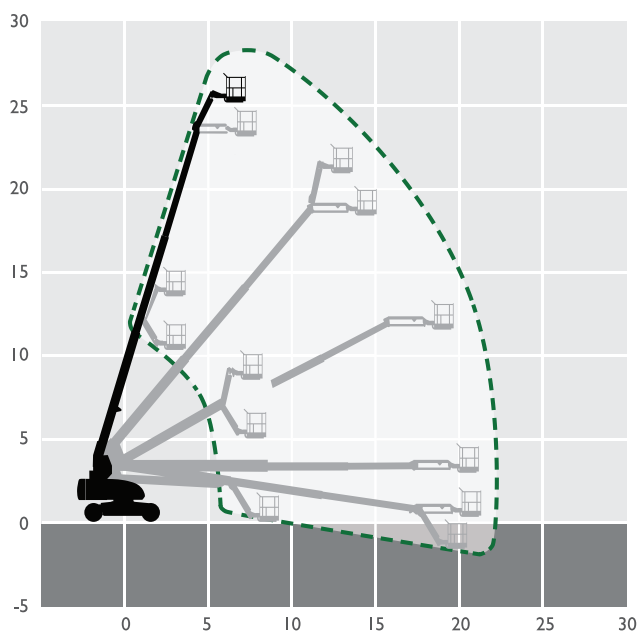
REACH HEIGHT	28.21m
PLATFORM HEIGHT	26.21m
CLOSED LENGTH	12.95m
CLOSED HEIGHT	3.00m
CLOSED WIDTH	2.49m
TURNING RADIUS	6.40m
LIFTING CAPACITY	227kg/341kg
WEIGHT	17,146kg
ROTATION	360°
HORIZONTAL REACH	23.42m
CAGE DIMENSIONS	0.91x1.83m
IPAF CATEGORY	3b
POWER	DIESEL

FEATURED MODEL	SKYJACK SJ86T
ALTERNATIVE MODEL	JLG J860SJ

These machines offer the following range of features:

- Axle based 4WD
- Oscillating axle
- 360° continuous turret rotation
- 45% gradeability
- Grip lug foam-filled tyres
- Tilt alarm with drive cut-out
- Modular platform railing system

The information provided is for guidance only. It may change at any time in accordance with manufacturer's specification.



**For further information
visit accessrental-gulf.com**