



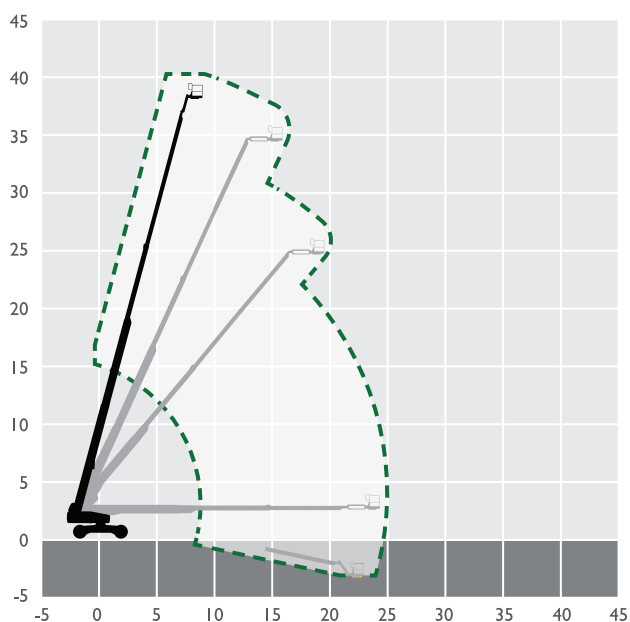
# 40m Diesel Telescopic Boom

## MACHINE SPECIFICATION SHEET

### BS40D

REACH HEIGHT	40.15m
PLATFORM HEIGHT	38.15m
CLOSED LENGTH	14.25m
CLOSED HEIGHT	3.07m
CLOSED WIDTH	2.44m
TURNING RADIUS	5.74m
LIFTING CAPACITY	227kg
WEIGHT	20,248kg
ROTATION	360°
HORIZONTAL REACH	24.38m
CAGE DIMENSIONS	0.91x2.44m
IPAF CATEGORY	3b
POWER	DIESEL

FEATURED MODEL	GENIE S125
----------------	------------



These machines offer the following range of benefits:

- Self-leveling platform
- Hydraulic platform rotation
- Fully proportional Hall effect joystick controls
- Hydraulic oil cooler
- AC power to platform
- 360° continuous turntable rotation
- Tilt Alarm

The information provided is for guidance only. It may change at any time in accordance with manufacturer's specification.

**For further information  
visit [accessrental-gulf.com](https://accessrental-gulf.com)**